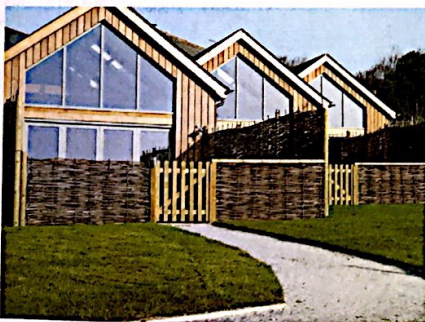


North Cornwall MAWGAN PORTH

Merlin Farm

Owners of Merlin Farm Lucy and Darrel have hospitality in the blood, the latter having inherited a hotel in Newquay which he eventually sold to buy the farm three years ago. With a background in hotel architecture, Darrel set about renovating the stables, which have now been transformed into four boutique self-catering cottages.

Set in the backdrop of 27 acres of beautiful countryside overlooking the Vale of Lanherne, sustainability lies at the heart of Merlin Farm,



encompassing everything from argon filled windows and solar powered water heating to an organic hedge trimmer in the form of a donkey! Having been born and raised in Cornwall, the couple are both well-informed and forthcoming on the best places to visit, and perhaps most importantly, eat. Just as well then that Merlin Farm is less than half an hour away from Jamie's Fifteen, Rick Stein's eateries and The Eden Project.

T: 01637 860236
W: www.merlinfarm.co.uk



The Scarlet

One of the most talked about hotels of 2010, The Scarlet most recently picked up an AA award for 'Eco-Hotel of the Year' – a category which ran for the first time last month. Owned by three sisters with a vision for offering guests 'really delicious food, Cornish art and quirky stuff to make people smile', the designed hotel capitalises on its stunning coastal views through its large glass panels throughout.

The restaurant is headed up by Michelin starred chef Ben Tunnicliffe, whose passion for

servicing robust food showcases some of the best local fare on offer.

Expect a balance of light, airy spaces with cosy, private areas, allowing you to mix with our other guests or enjoy a bit of peace and solitude. As an adult-only venue however, families would be well advised to try its neighbouring hotel, The Bedruthen Steps.

T: 01637 861800
W: www.scarlethotel.co.uk

Carnewas Tea Room

Ben Lowe – emerging star of a Saatchi Gallery exhibition – recently depicted the area's iconic Bedruthen Steps in all their glory. Those looking to take a walk down the steps would be well advised to reward themselves with a stop-off at Carnewas Tea Room when they climb back up them. The well appointed tea room is owned by The National Trust and boasts perhaps the best cream teas to be found for miles around; no mean feat given the stiff competition.

Opening hours are seven days a week from 11-4pm.

T: 01637 860701
E: carnewas@nationaltrust.org.uk

